

# 70-36AJ

## CAPABILITY

- 70' working height
- 36' horizontal reach
- 440 lbs lift capacity
- Multiple position swing-out outriggers

## STANDARD FEATURES

- Wired remote control
- Outriggers control from remote
- Lightweight aluminum detachable basket
- Hydraulic basket rotator
- Movement alarm
- Extra long black rubber tracks
- Long travel outriggers
- AC power to basket
- Air-Water line to basket
- Proportional controls
- Hour meter

## OPTIONS AND ACCESSORIES

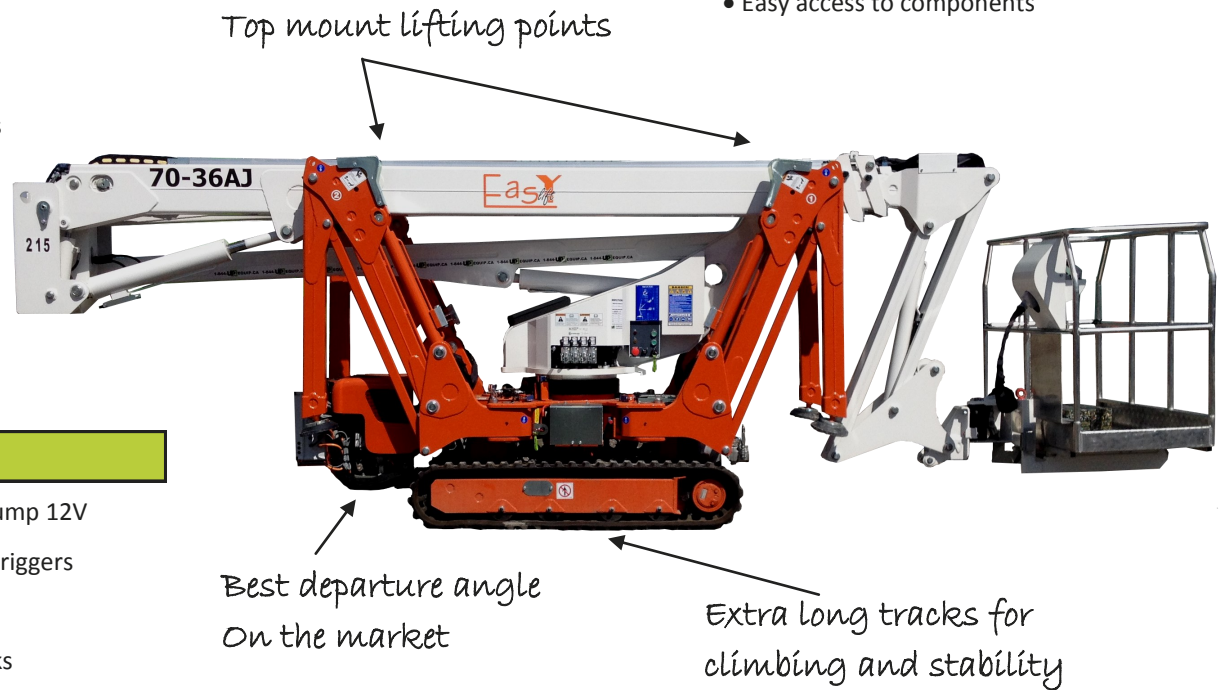
- Emergency descent electric pump 12V
- Automatic self leveling for outriggers
- Radio remote control
- Non-marking soft rubber tracks
- Special painting
- Working lamp on basket
- One Man fiberglass basket
- Two Men fiberglass basket
- Outriggers "sinking" alarm
- Teflon pads kit (4) for stabilizers;
- Strobe light (beacon)
- Casters on basket
- Winter start package
- Hostile Kit

## MANY CONFIGURATIONS FOR YOUR NEEDS

- Honda gas + electric AC motor
- Hatz diesel + electric AC motor
- Honda propane + electric AC motor
- Tri-fuel; gas/propane/electric AC
- Lithium Ion battery + ultra fast charger
- Lithium Ion + gas engine + AC
- Lithium Ion + gas + propane + AC

## PRODUCTIVITY

- Top mount lifting points for lifting
- Long travel outriggers; raise the tracks nearly 4 feet off the ground
- Variable outriggers pattern for adaptability
- High departure angle for climbing
- High speed operational boom
- 5 feet articulated jib @ 440 lbs
- Standard jib raising enabled while driving
- 360° turret rotation
- Easy access to components



## SAFETY

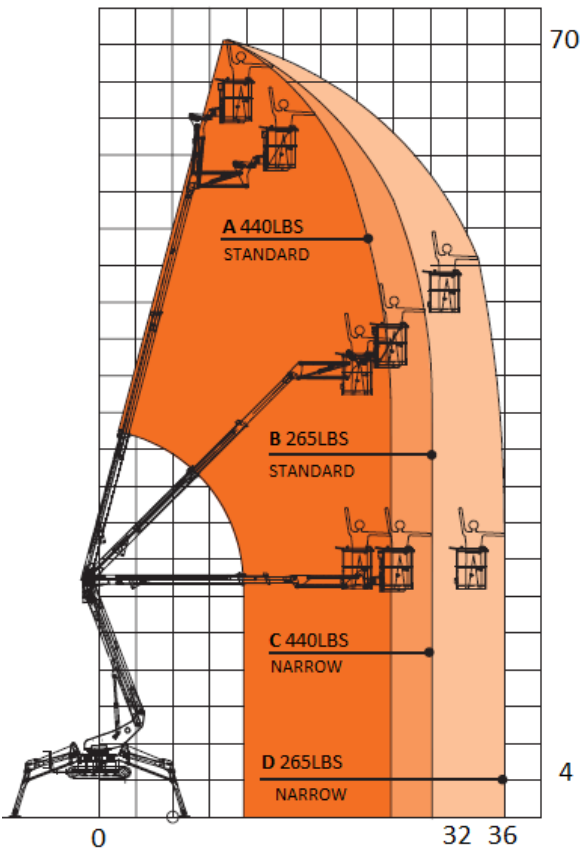
- Basket anti over-load redundant sensors
- Active envelope stability management system with redundant sensors
- Easy to read operational pilot lamps
- Wind safe up to 28Mph (45Kph)
- Solid state simple electrical components
- Proportional hydraulic joystick controls for intuitive and precise boom movements
- Smooth and automatic basket leveling
- Harness anchor points

## RELIABILITY

- High tensile steel boom Domex SSAB
- Standard high quality components like Sauer Danfoss, Telemecanique, Finder
- External power track for easier inspection and replacement of components
- External adjustable telescopic boom wear pads; no shimming required
- Greasable fittings in all pivot points
- High quality powder coat paint

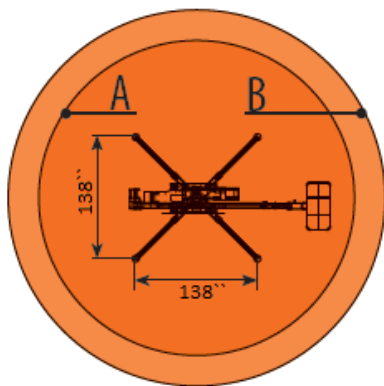
# 70-36AJ

## WORKING AREA

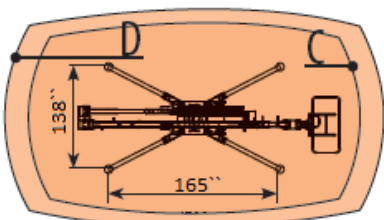
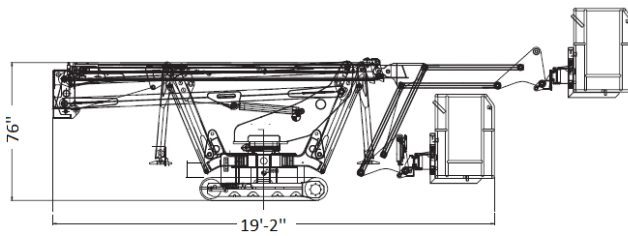


## DIMENSIONS

- Working height 70'
- Basket capacity at full height 440 lbs
- Maximum horizontal side reach
  - with 265 lbs 36'- 0"
  - with 440lbs 29'- 5"
- Minimum length
  - without basket 17'- 10"
  - travel position 19'- 2"
- Minimum width 34.5"
- Basket dimensions (L x W x H)
  - Aluminum 55" x 28"
  - One man fiber 30" x 28"
  - Two men fiber 44" x 28"
- Turret rotation 360 degrees
- Max slope travel ability 17 Deg or 32%
- Outriggers footprint
  - Standard 11'-6" X 11'-6"
  - Narrow 8'-3" X 14'-7"
- Total weight diesel 6 613 lbs



## SIDE VIEW



## TOP VIEW

