

EASY LIFT 87-48AJ

Simple Inside™

CAPABILITY

- 87' working height
- 48' horizontal reach with 265 lbs
- 507 lbs lift capacity
- Below ground level reach
- Outriggers set-up in 9 feet alley
- 35 inches total width

MANY CONFIGURATIONS FOR YOUR NEEDS

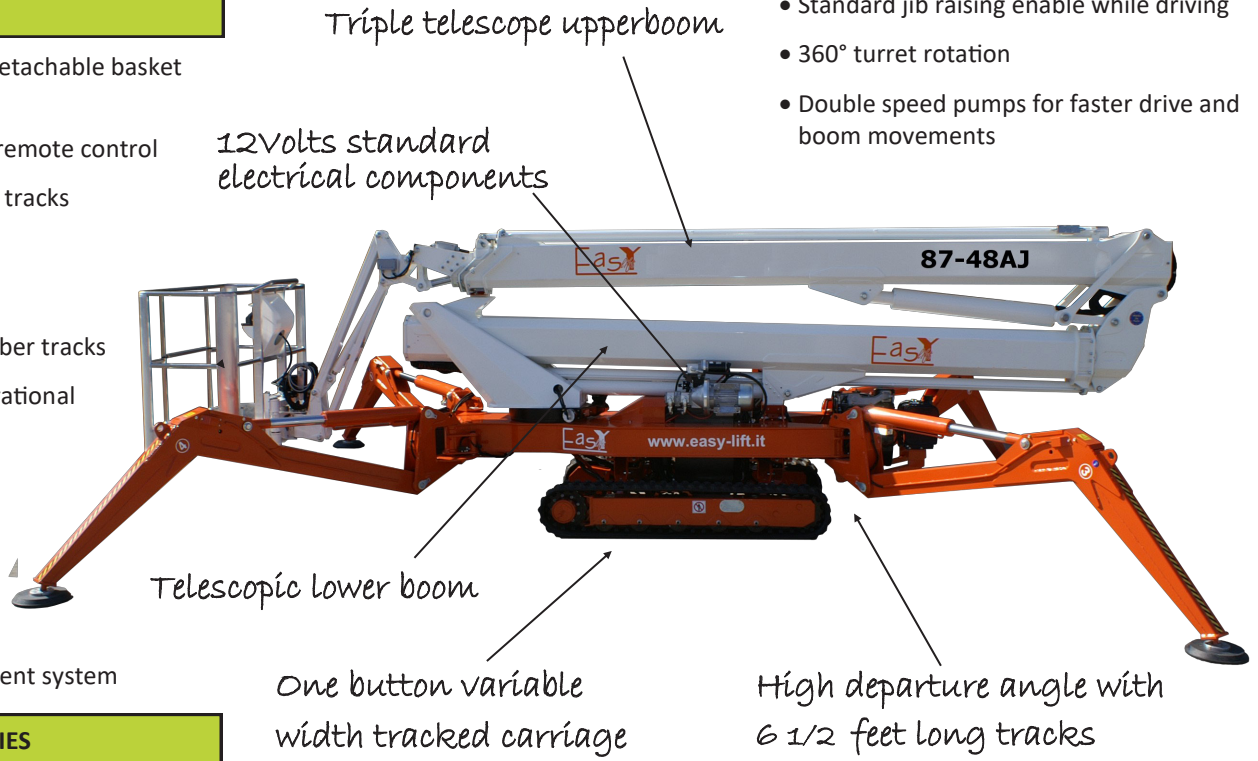
- Hatz Air Cool diesel + electric AC motor
- Lithium Ion battery + ultra fast charger
- Hatz Air Cool diesel + Lithium Ion
- Hatz diesel + Lithium Ion + AC motor

PRODUCTIVITY

- Top mount lifting points for crane
- Tie down anchor points
- Reversible articulated jib @ 507 lbs
- High departure angle for climbing
- High 14 inches ground clearance
- High speed operational booms
- Standard jib raising enable while driving
- 360° turret rotation
- Double speed pumps for faster drive and boom movements

STANDARD FEATURES

- Lightweight aluminum detachable basket with control protection
- Quick disconnect wired remote control
- Hydraulic variable width tracks
- Basket rotation 180°
- Movement alarm
- Ultra long 6 1/2 feet rubber tracks
- Articulated 140° jib operational at full capacity
- AC power to basket
- Air-Water line to basket
- Proportional controls
- Hour meter
- Manual emergency descent system



OPTIONS AND ACCESSORIES

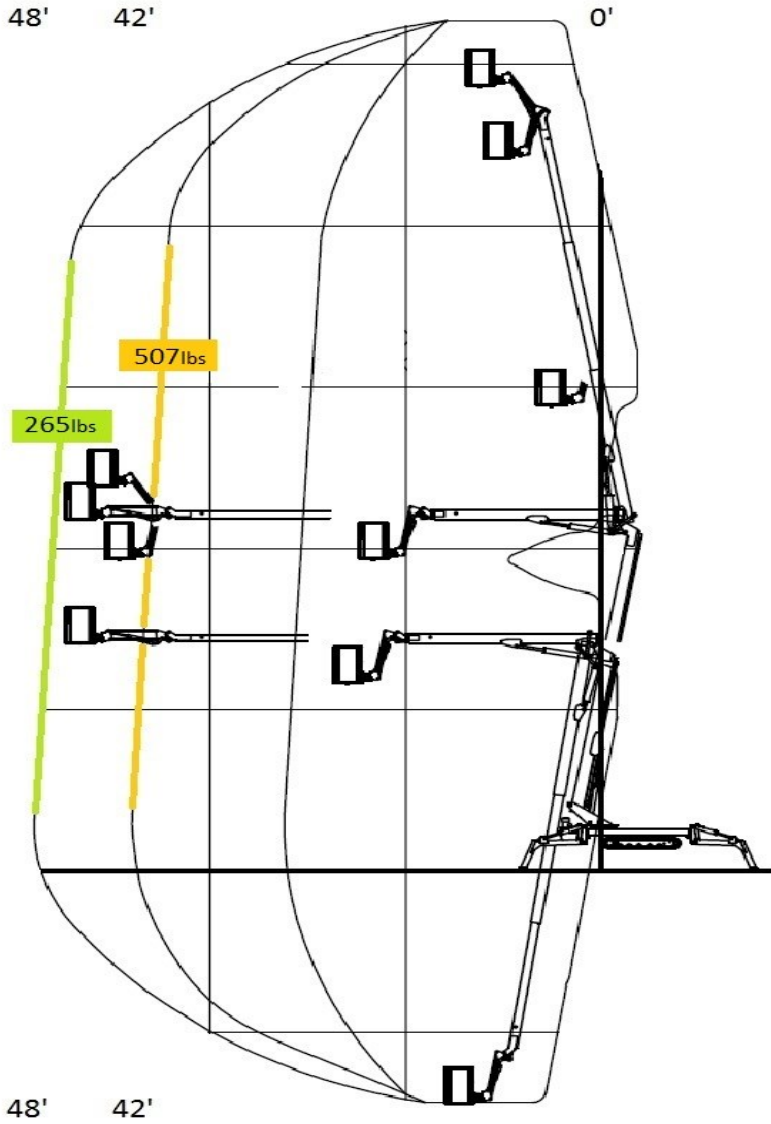
- Emergency descent 12V electric pump
- Full arborist safety and production package
- Hostile protection with thick plate covers
- Radio remote control (300 feet)
- Non-marking soft rubber tracks
- Special painting
- Working lamp on basket
- One /two Men fiberglass baskets
- Outriggers "sinking" alarm
- Teflon pads kit (4) for stabilizers;
- Strobe light (beacon)
- Winter start kit

SAFETY

- Active envelope stability management system with redundant common switches
- Easy to read operational pilot lamps
- Wind safe up to 28Mph (45Kph)
- Solid state 12V electrical components
- Proportional basket controls for intuitive and precise boom movements
- Smooth and automatic basket leveling
- Harness anchor point(s)
- Basket redundant overloading device

RELIABILITY

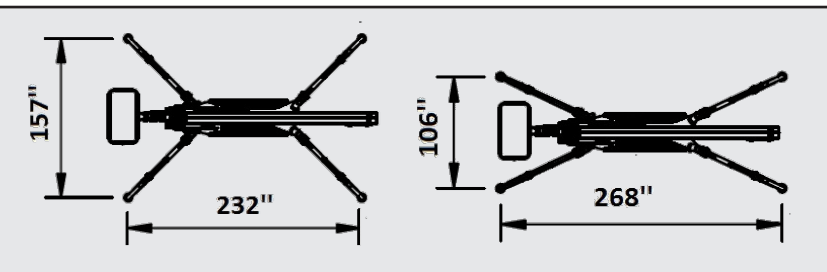
- High tensile steel boom Domex SSAB
- Standard high quality components like Sauer Danfoss, Telemecanique, Finder
- Patented telescopic boom power-track for easier replacement of components
- External adjustable telescopic boom wear pads; no shimming required
- Simple and painless 12 Volts system; no complicated 24 V system
- High quality powder coat paint



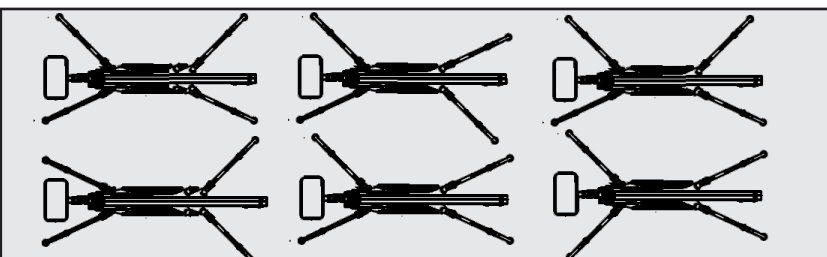
DIMENSIONS

• Working height		87'
• Horizontal side reach @265lbs		48'
	@ 507lbs	42'
• Basket capacity at full height		507 lbs
• Overall width carriage retracted		35"
	width carriage extended	51"
• Below ground outreach		Minus 25'
• Minimum length	without basket	19'-7"
	travel position	22'- 3"
• Ground clearance		14"
• Overall height with tracks retracted		78"
	with tracks extended	84"
• Articulated jib length		5'
• Articulated jib motion		-80° / + 60°
• Basket dimensions	Aluminum	55" x 28"
	One man fiber	30" x 28"
	Two men fiber	44" x 28"
• Turret rotation		360°
• Basket rotation		180°
• Max slope travel ability		32° or 62 %
• Outriggers footprint Standard		13'-1" X 19'-4"
• Outriggers footprint Narrow		8'-10" X 22'-4"
• Total weight diesel		7 934 lbs

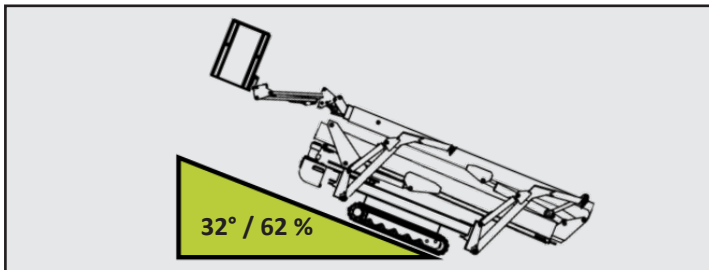
OUTRIGGERS SETTING STANDARD AND NARROW



OUTRIGGERS INFINITE LAYOUT SAMPLE



CLIMBING CAPABILITY



CONTACT US

Toll free 1-844-UPequip
Local 514-360-7191



Build your unit online or Live Chat www.UPequip.ca

