

**PICK & CARRY CRANE**

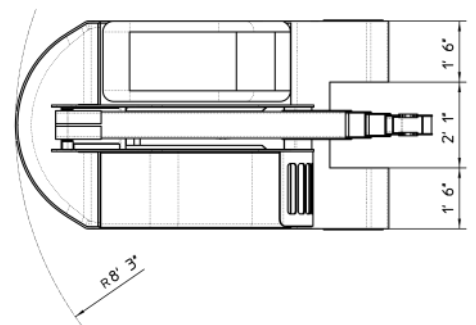
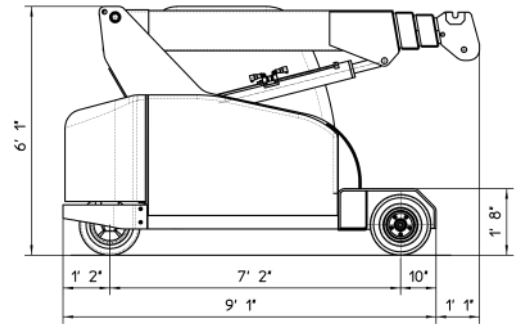
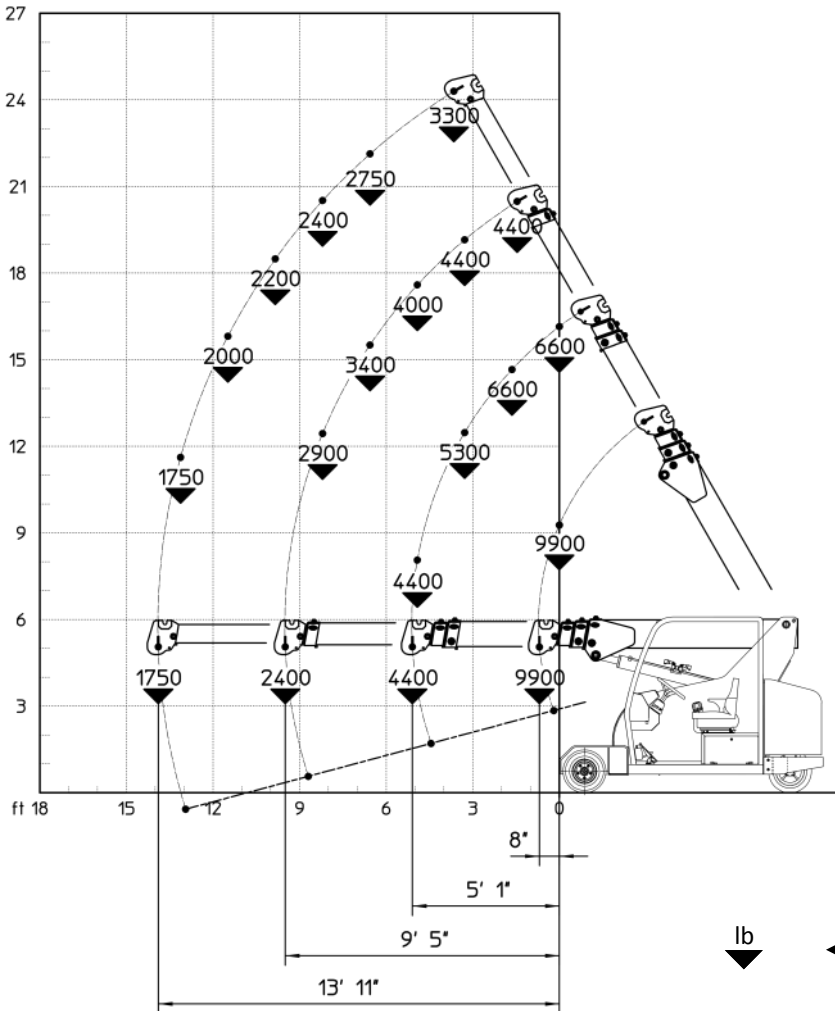


**MC 45 - Max capacity 9900 lb**



**Electric by battery**

# MC 45



lb ← ft.

MODEL	MC 45
CRANE CLASSIFICATION ACCORDING TO UNI ISO 4301-1	A3
REFERENCE STANDARDS	2006/42 CE - 2004/108 CE I.S.P.E.S.L. DIN 15018 (1.3) - 15019 (1) Class H2 B3 ANSI B30.5 - 2007 and subsequent modifications
TRACTION	Electric
BOOM ACTIVATION	Hydraulic
POWER TYPE	Electric battery
MAX. CAPACITY (lb)	9900
TOTAL WEIGHT (lb)	10560
BOOM ANGLE TOPSIDE (°)	60
BOOM ANGLE DOWNSIDE (°)	-15

**FRAME:** JMG designed and manufactured, box type, torsion resistant design of high strength structural steel.

**BOOM:** Made of moulded and welded quality steel plate, comprised of a base unit, and three hydraulic extensions

**TRACTION MOTOR:** Electric motor 5 kW 48 V AC, insulation class H.

**MOTOR PUMP:** Electric motor 9 kW 48 V AC, insulation class H.

**ACTIVATION:** MOSFET electronic switch

**BATTERY:** 48 V 560 Ah.

**TRANSMISSION:** Rear axle through geared reducer

**WHEELS:** Front axle: 4 superelastic 18x7x8" - Rear axle: 1 super elastic 220/50-10"

**BRAKING:** Service brake: pedal operated hydraulic disc brakes on front wheels. Parking and emergency brake: electromagnetic type acting on the shaft engine with automatic insertion.

**STEERING:** On the rear wheel by hydraulic motor controlled by hydrostatic power steering with load sensing priority valve feeded by the hydraulic system of the crane.

**HYDRAULIC SYSTEM:** Powered by a silenced gear pump. Actuators are controlled through electro-proportional hydraulic distributor operated by electronic joystick. Filter and safety valve. 22 MPa max pressure.

**SAFETY DEVICES:** Electronic load moment indicator.

**OPTIONAL EQUIPMENT (at extra charge)**

Hydraulic winch - Jib - Non-marking wheels - Man basket - Hydraulic chain hoist  
Cable remote control - Radio remote control - Hydraulic forks