

# TH

# 5,5.19 P

# 5,5.19

12,100 lbs / 62 ft

PRELIMINARY

- **Lowered design** for great stability
- Available with **Deutz Stage V** engines
- Available in two engine sizes, 55 kW and 75 kW, to suit your needs
- Standard pivoting stabilisers for optimised lifting capacities up to 12,100 lbs
- **350 bar L/S** hydraulic system
- **4WD**

## MAIN SECTORS

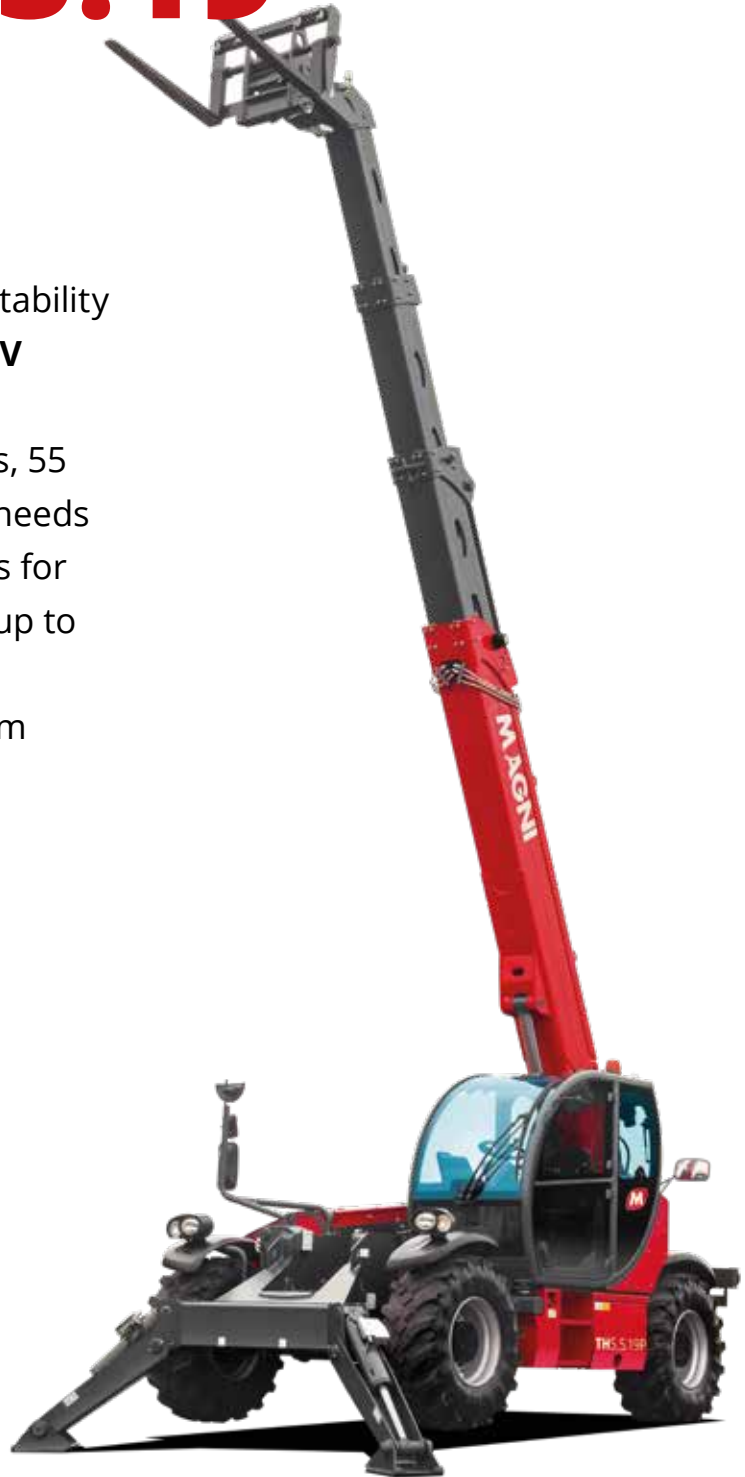
---



INDUSTRY

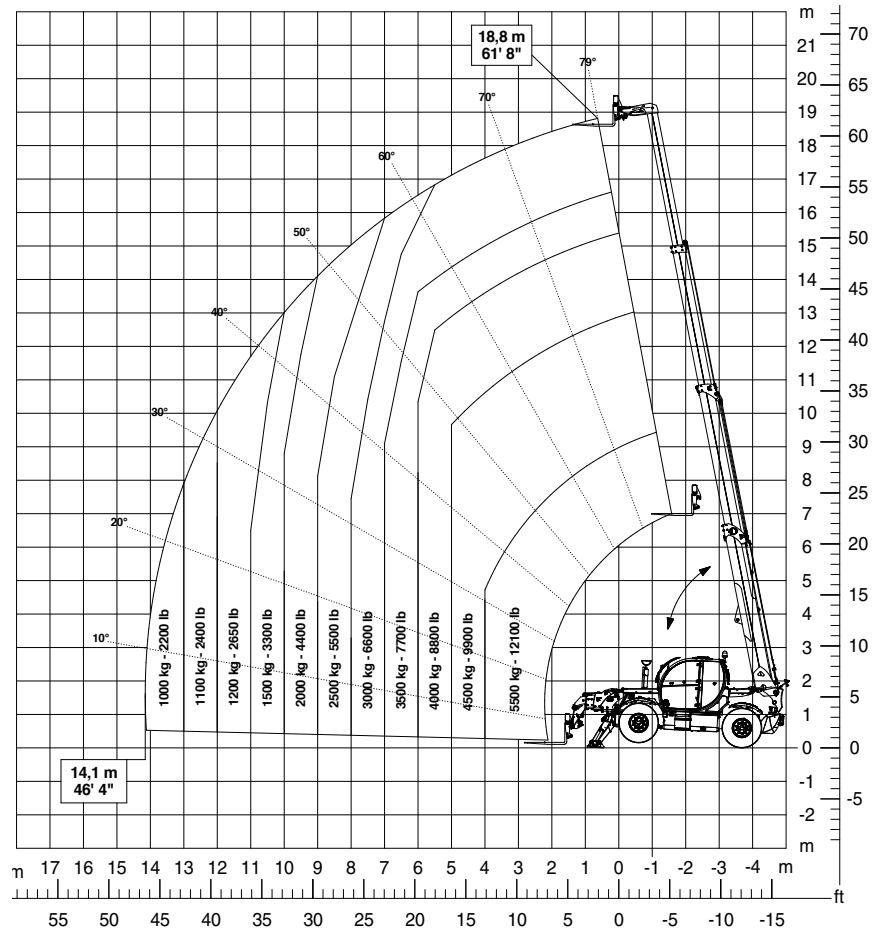


CONSTRUCTION



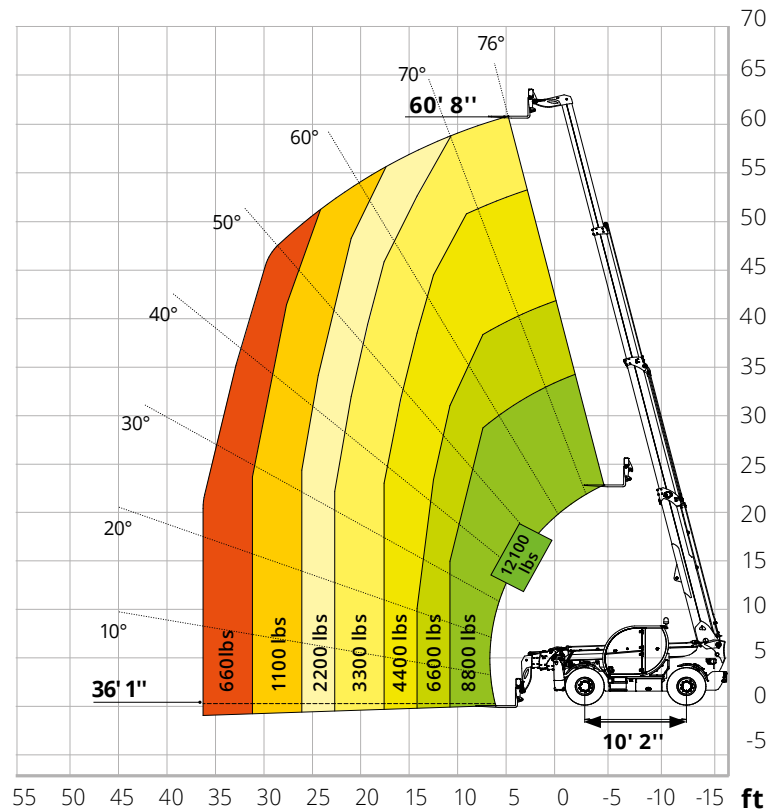
Load chart  
on fully  
extended  
stabilizers

**PRELIMINARY**



Load chart  
on tyres

**PRELIMINARY**



# TH 5,5.19 P / TH 5,5.19

**PRELIMINARY**

	<b>TH 5,5.19 P</b>		<b>TH 5,5.19</b>		
<b>Machine model</b>	Telescopic handler				
	Maximum lifting capacity		12,100 lbs (center of gravity 24 in)	12,100 lbs (center of gravity 24 in)	
	Maximum lifting height		61' 8"	61' 8"	
<b>Engine</b>	Type	<b>Deutz TCD 3,6 L4 Stage V</b>	<b>Deutz TCD 3,6 L4 EDG Stage IIIA</b>	<b>Deutz TCD 3,6 L4 Stage V</b>	<b>Deutz TCD 3,6 L4 EDG Stage IIIA</b>
	Rated power	74,4 kW (101,2 hp) @ 2,200 rpm		55,4 kW (75,3 hp) @ 2,200 rpm	
	Maximum torque	410 Nm @ 1,600 rpm		405 Nm @ 1,300 rpm	390 Nm @ 1,300 rpm
	Displacement	0.95 US gal		0.95 US gal	
	Cylinders	4 in line		4 in line	
	Engine configuration	Diesel direct injection turbocharged		Diesel direct injection turbocharged	
	Cooling system	Water – intercooler		Water – intercooler	
<b>Transmission</b>	Type	Hydrostatic		Hydrostatic	
	Model	Bosch Rexroth		Bosch Rexroth	
	Maximum pressure	500 bar		500 bar	
	Displacements	Electronically controlled variable displacement pump Variable displacement motor		Electronically controlled variable displacement pump Variable displacement motor	
	Gear box	Dropbox, 2 speeds forward-reverse		Dropbox, 2 speeds forward-reverse	
<b>Axles and brakes</b>	Type	Axles with planetary gearboxes		Assali con riduttori epicicloidali	
	Rear axle	Oscillating and steering with hydraulic locking		Oscillating and steering with hydraulic locking	
	Front axle	Oscillating and steering with levelling +/- 8°		Oscillating and steering with levelling +/- 8°	
	Service brake	Hydraulically operated wet multi-disk brakes on each axle		Hydraulically operated wet multi-disk brakes on each axle	
	Parking brake	Spring applied hydraulic release Multi-disk brake (S.A.H.R.)		Spring applied hydraulic release Multi-disk brake (S.A.H.R.)	
	Tyres dimensions	445/65 R22,5		445/65 R22,5	
		Max. travel speed		22 Mph	15 Mph
<b>Performance</b>		Drawbar pull		72 kN	72 kN
		Gradeability		51 %	51 %
		Turning radius (end of forks)		221"	221"
	<b>Weights</b>	Total unladen		31,520 lbs	31,520 lbs
Front axle unladen (boom retracted and lowered)		13,180 lbs	13,180 lbs		
Rear axle unladen (boom retracted and lowered)		18,340 lbs	18,340 lbs		
<b>Tank and system capacities</b>	Fuel tank		38 US gal	38 US gal	
	AdBlue		2.6 US gal *	2.6 US gal *	
	Hydraulic oil tank		24 US gal	24 US gal	
	Engine oil tank		2.4 US gal	2.4 US gal	
	Cooling liquid		5.3 US gal	5.3 US gal	
<b>Hydraulic circuit for movements</b>	Max. operating system pressure		350 bar	350 bar	
	Circuit type		Load sensing	Load sensing	
	Service pump		Bondioli & Pavesi - Variable displacement	Bondioli & Pavesi - Variable displacement	
	Controls for boom movements		Danfoss – SIL 2 Electro-proportional valve	Danfoss – Electro-proportional valve	
	Controls for stabilizers		Bosch Rexroth – Electro-hydraulic actuators	Bosch Rexroth – Electro-hydraulic actuators	
	Movements control		1 joystick Danfoss with FNR switch and dead man safety device - Management with CAN bus technology	1 joystick Danfoss with FNR switch and dead man safety device - Management with CAN bus technology	

**Standard met**  
 EN 1459-1: concerning standards for variable-reach trucks  
 EN 13000: concerning standards for mobile cranes  
*Only for model TH 5,5.19 P:* EN 280: concerning standards for mobile elevating work platforms  
 FOPS Level 2 / ROPS  
 UE 2016/1628: concerning engine emissions standards

# TH 5,5.19 P / TH 5,5.19

PRELIMINARY

