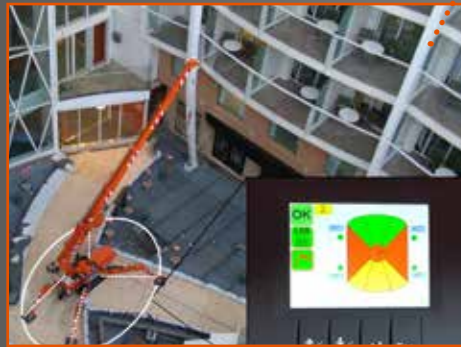


# SPX409XL Main Features

## GEOMETRICAL STABILITY CONTROL

- ✓ Outriggers multi-position and angle
- ✓ Automatic load of working area
- ✓ Different working area:
  - Red - 0%
  - Grey - pick&carry
  - Yellow - 50%
  - Green - 100%



## PLUG&PLAY SYSTEM CONTROL

- All accessories and tools:
- ✓ Integrated with the crane
  - ✓ Immediately recognized by the software
  - ✓ With a single radio remote control (same of the crane)



## DIFFERENT ATTACHMENTS

- ✓ Three different JIBS
- ✓ Different tools completely integrated and radio remote controlled: glass manipulator, pipe manipulator, hydraulic fork...

SEARCHER HOOK



GLASS MANIPULATOR



MANUAL JIB

HYDRAULIC JIB



**CJEKKO**  
SPX409XL



Jekko srl  
Via Campardone, 1 - 31014 Colle Umberto (TV) Italy  
info@jekko.it - www.jekko-cranes.com

Product Catalog

# SPX409XL

1950 lb

140" 1/8 x 30" 1/2 x 77"

55'8" max

37'11" max

The top of the range mini crane. Technology, innovation and reliability enclosed in the best-seller mini crane ever.



## Technical Information

Dimension	L x W x H	140" 1/8 x 30" 1/2 x 77"
Stab. Area		146" 1/8 x 146" 1/8

Crane & Options Weights		lb
SPX409XLCDH		4576
SPX409xIC+		2280
		440
2.5T-D7		44
PP220-4DX		99
JIB800GX		55
JIB800.1MX		242
JIB800.2H1MX		374
Outriggers Mats		37

ENGINE	Petrol Engine	KUBOTA D722-E3B	14.9 kW 20 Hp
ELECTRIC	Standard Battery	24V, 420Ah	4.0 kW 5.5 Hp
	Lithium Battery	24V, 288Ah	4.0 kW 5.5 Hp

Speed	1.12 mph (CDH) 0.45 mph (C+)
-------	---------------------------------

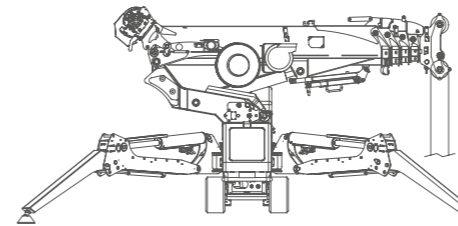
Ext. Tracks Gradability	20°
-------------------------	-----

Ext. Tracks	30" 1/2 - 43" 1/4
-------------	-------------------



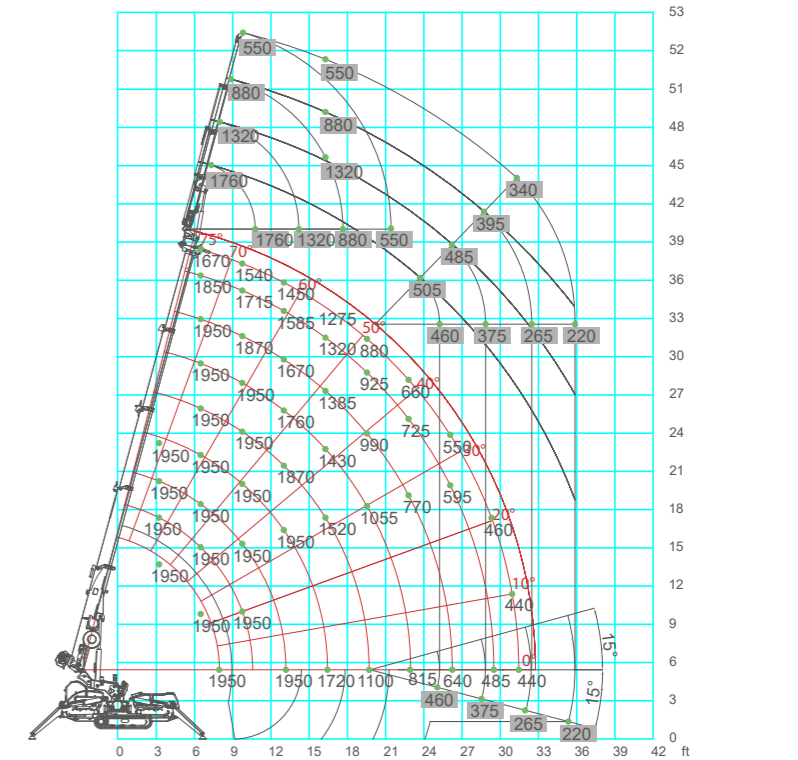
## Winch & Fall Stages

Main Winch	1950 lb (Single line) 167' - Ø 3/16" 80.1-108.9 ft/min
------------	--

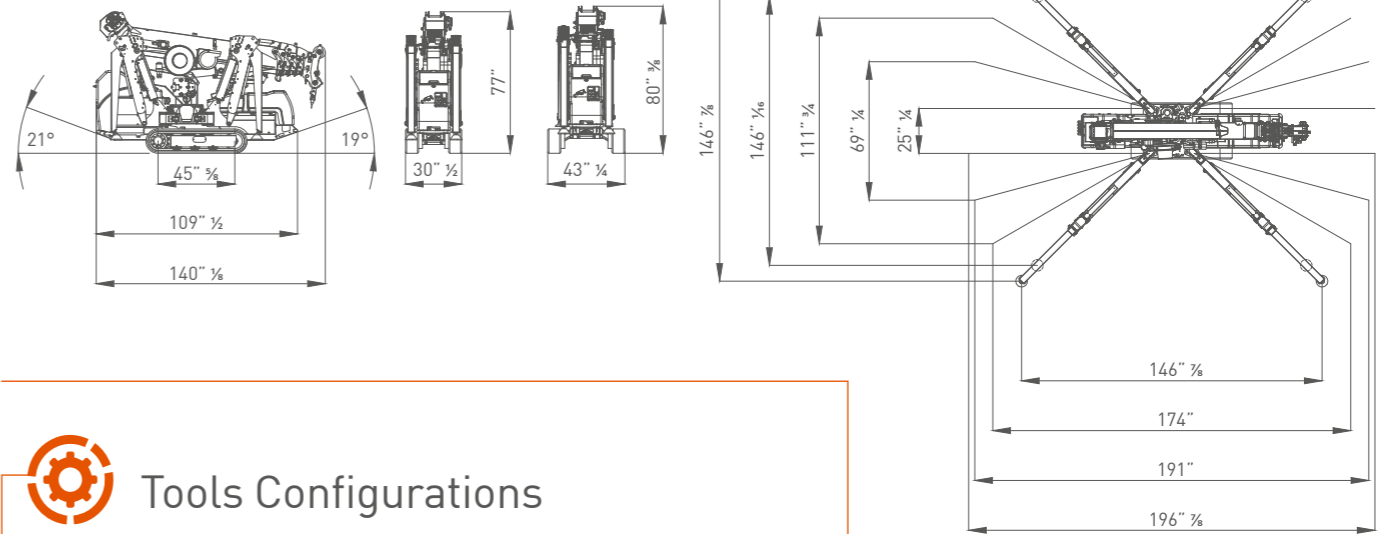


Max. Capacity	Line	Metres
1950 lb	3	-19 m
1950 lb	2	-31 m
1950 lb	1	-64 m

## Load Chart



## Dimensions



## Tools Configurations

	JIB800GX	JIB800.1MX	JIB800.2H1MX
max	1760 lb	1760 lb	1760 lb
max	1630 lb @ 40'11"	1100 lb @ 49'10"	550 lb @ 55'8"
max	395 lb @ 34'2"	240 lb @ 30'10"	220 lb @ 36'1"

## Crane Options

