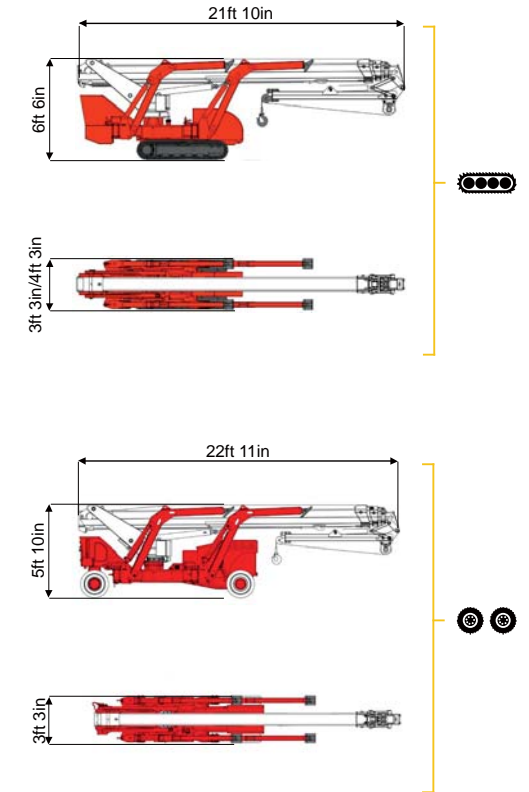
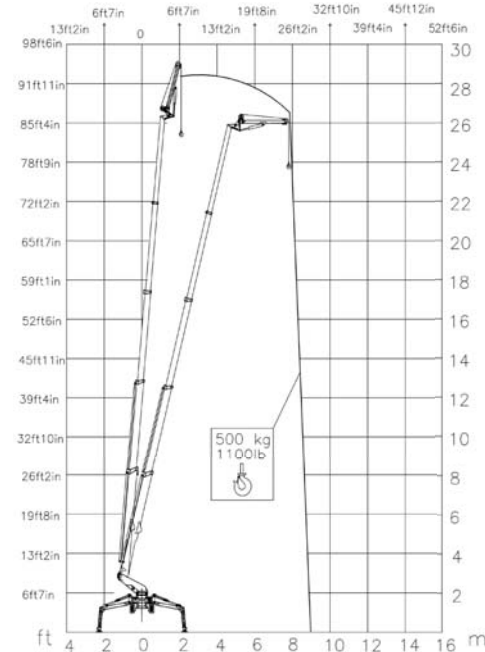




93ft 6in ↑
29ft 6in →
1100 lb ⚙️



BI-ENERGY
Diesel+AC



TSJ 98/C



93ft 6in

29ft 6in

1100 lb

660°

9ft 5in-16ft 4in

44%

42%

0,62 mph

10251 lb

6519 lb

39,68 psf

81,02 psf

TSJ 98/R



93ft 6in

29ft 6in

1100 lb

660°

9ft 5in-16ft 4in

44%

29%

1,24 mph

10670 lb

6519 lb

41,35 psf

80,41 psf

Available version:

BI-ENERGY (DIESEL+AC)
ECO (DC+AC)
HYBRID (DIESEL+DC)

Characteristics and technical data are informative only and subjected to change without notice.



COMPANY WITH
QUALITY SYSTEM
CERTIFIED BY DNV GL
= ISO 9001 =

Palazzani Industrie S.p.A.
Via del Pavione, 4 - 25050 - Paderno F.C. (BS) - Italy
Tel. (+39) 0306857073
platforms@palazzani.it
www.palazzani.it