



# SPX532

DIESEL + ELECTRIC POWER UNIT



## REMOTE CONTROL



- ✓ Multifunctional
- ✓ Proportional
- ✓ LCD Screen
- ✓ Spare battery
- ✓ Alarm & error diagnostic

## HYDRAULIC JIB

- ✓ Hook or winch mode
- ✓ 2200 lb MAX capacity
- ✓ 56'9" MAX height
- ✓ Stored on board & easy to install



## SPECIAL FEATURES



- ✓ 880 lb Pick&Carry
- ✓ Virtual Walls
- ✓ Self-diagnostic system
- ✓ All accessories on board
- ✓ Variable displacement pump

## WINCH



- ✓ 1760 lb single line
- ✓ Up to 410 ft rope
- ✓ Up to 4 falls
- ✓ Pulley heads and pulley block on board

## MAIN BOOM

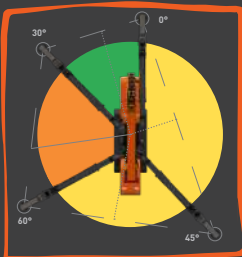


- ✓ 5950 lb MAX capacity
- ✓ 39'8" MAX height
- ✓ 4 hydraulic extensions by chain
- ✓ High-resistance steel
- ✓ Hook & winch mode

## 360° ENDLESS ROTATION

## OUTRIGGERS

- ✓ 1250 different configurations
- ✓ 4 independent stability areas
- ✓ Self-levelling system



## ADDITIONAL ELECTRIC POWER UNIT



- ✓ On board
- ✓ 50 Hz or 60 Hz
- ✓ Simple switch from diesel
- ✓ 220 V or 400 V

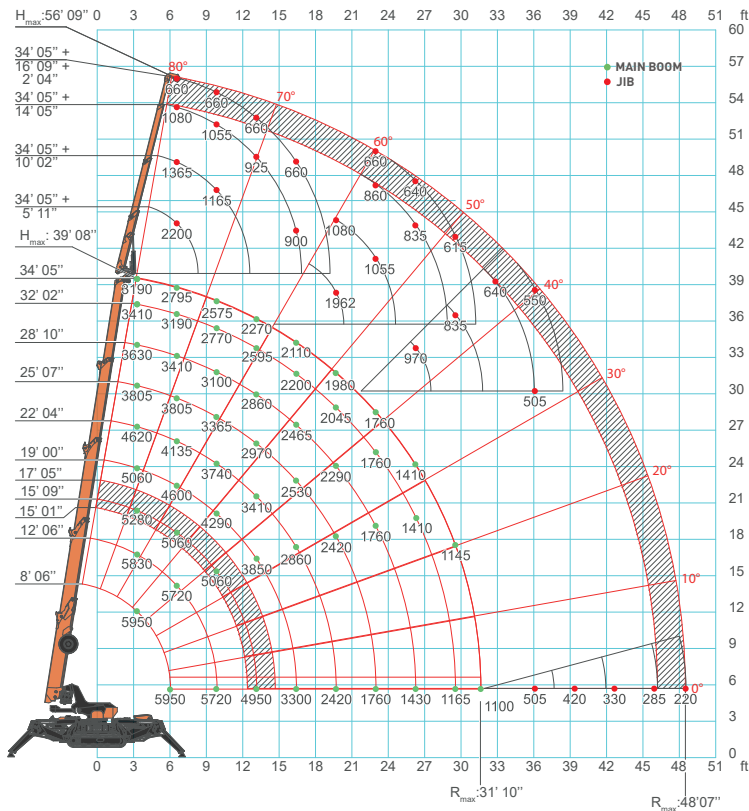
## TRACKS

- ✓ White or black tracks
- ✓ 45° hydraulically extendible





# LOAD CHART

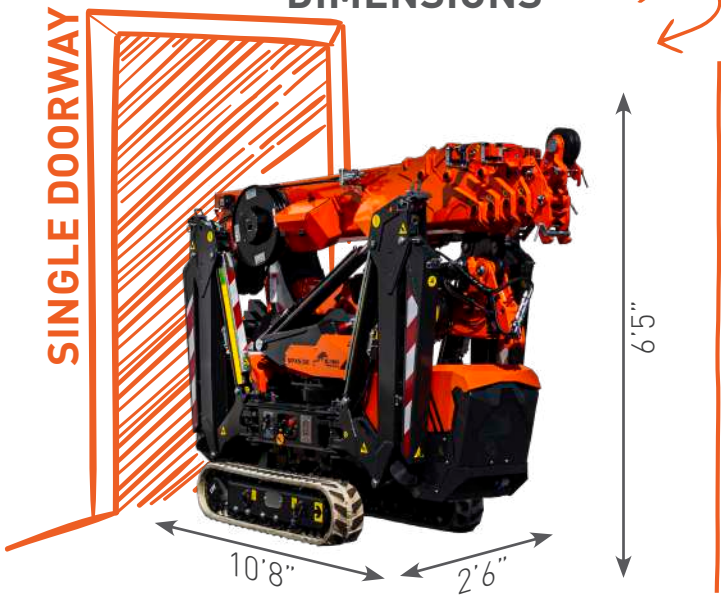


SCAN FOR MORE TECHNICAL DATA

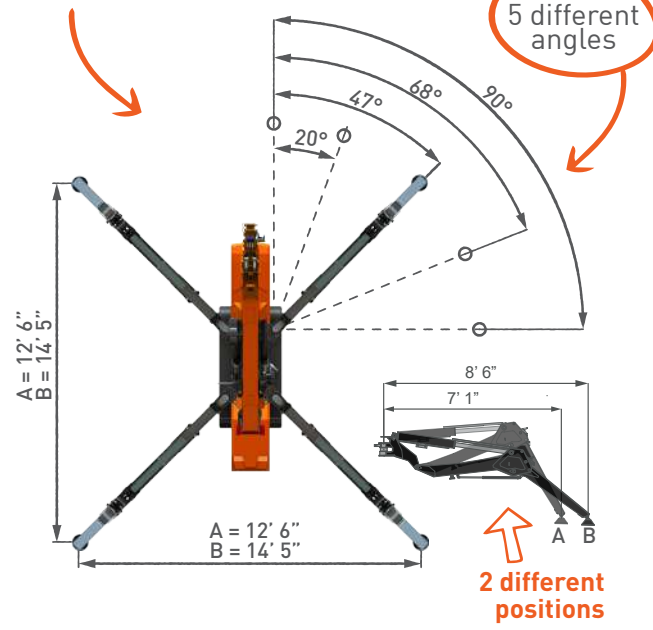
	lb
SPX532	5540
Hydraulic Jib	462
Winch	114
Electric Power Unit	139



# DIMENSIONS



# FOOTPRINT



# ACCESSORIES



**JVM800-R**  
1760 lb glass manipulator



**JIB500GR**  
1100 lb steel beam manipulator



**2640 lb RUNNER JIB**  
Stored on board



**2200 lb Hydraulic JIB**  
Stored on board